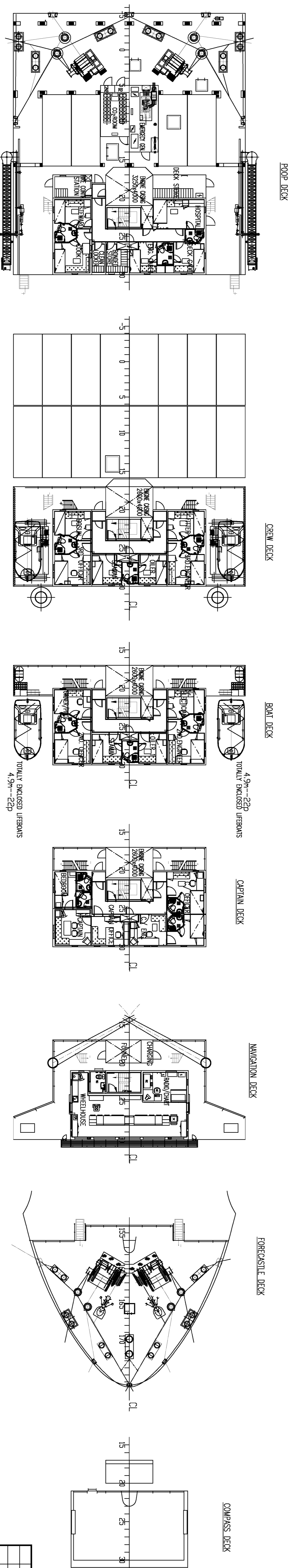
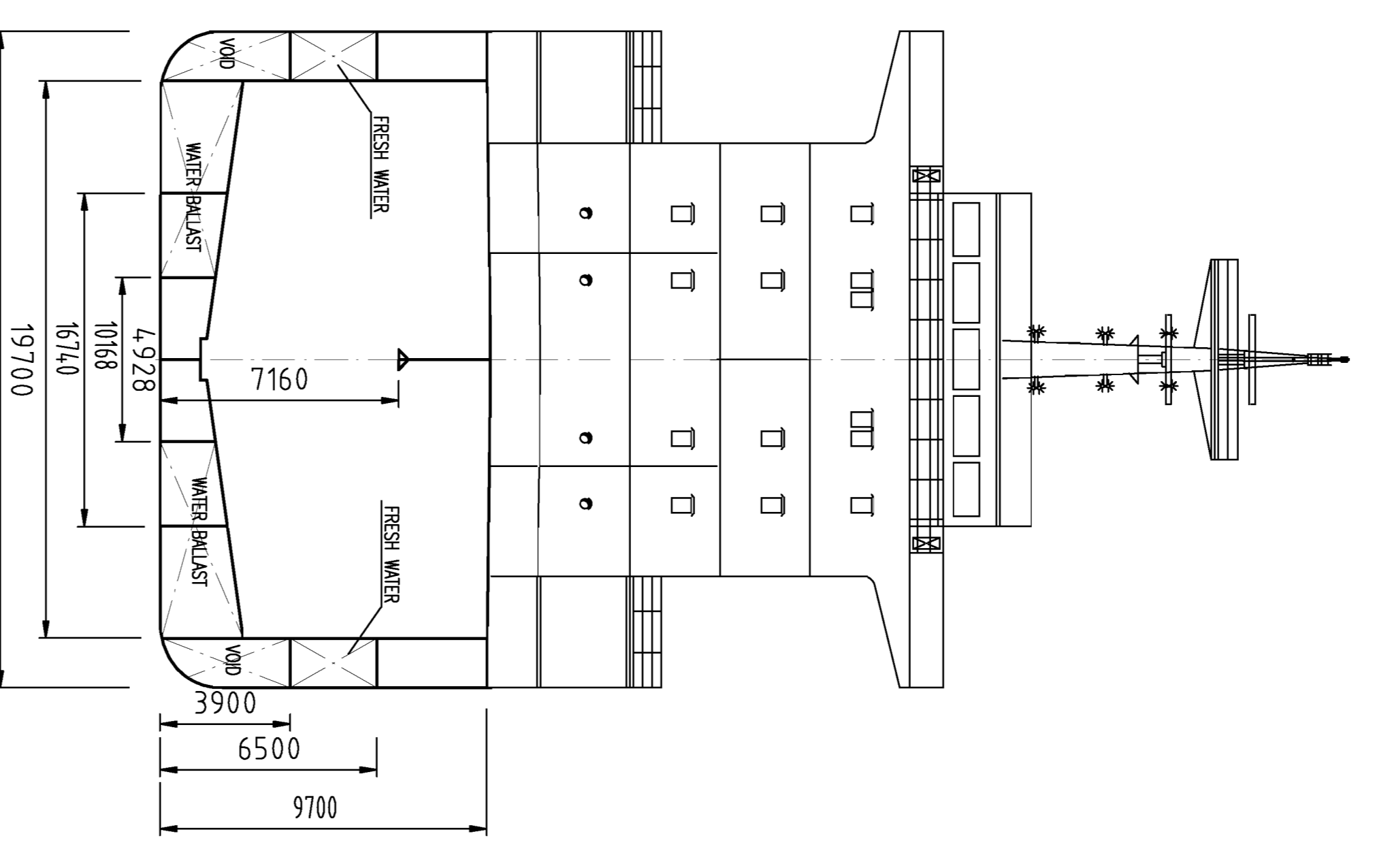
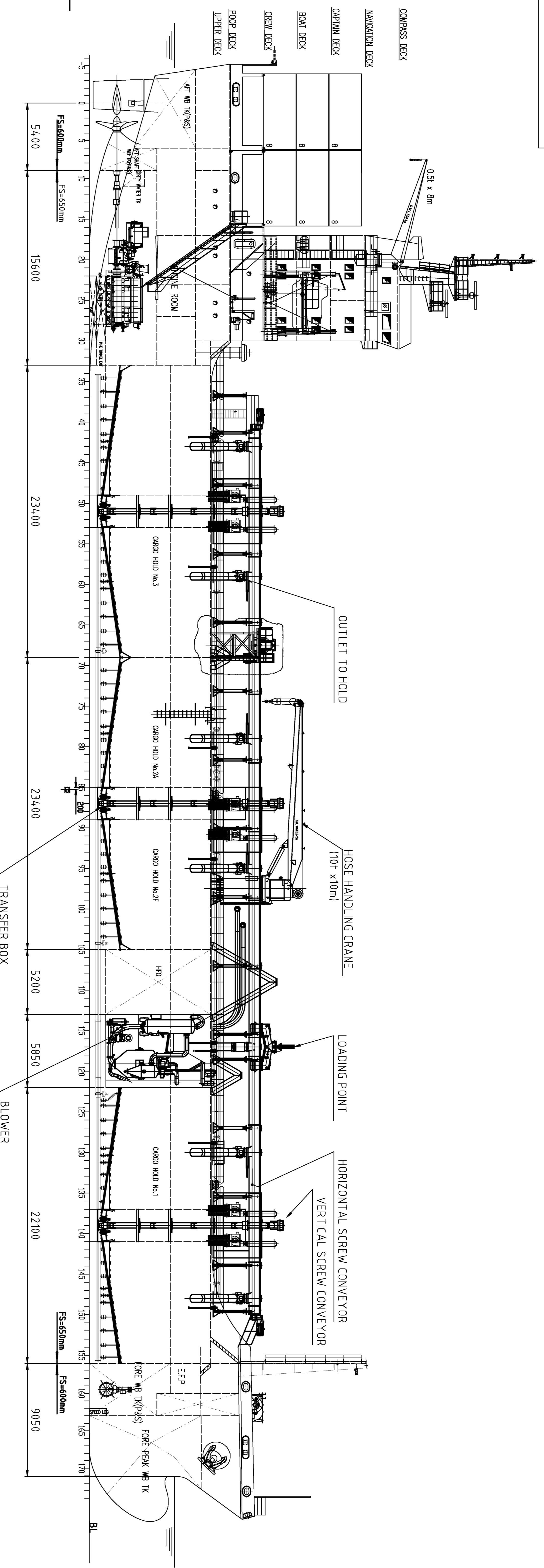


40-001-31884+C3



PRINCIPAL PARTICULARS

LENGTH O.A.	116.72 m
LENGTH B.P.	110.00 m
BREADTH	19.70 m
DEPTH	9.70 m
DRAFT	6.80 m
DEADWEIGHT	APPROX. 8375 t
CEMENT HOLD CAPACITY	APPROX. 7650 m ³
CLASSIFICATION:	
* CSA Cement Carrier, Ice class B Loading Computer I.	
* BWMP, Equipped With Container Securing Arrangements	
* CSM	
IMO No.	9444429

7500 DWT SELF-LIFTING MOUNTING CEMENT CARRIER		DETAIL DESIGN	
7500 ? 自卸水密船		SC 44.88HC-100-04	
GENERAL ARRANGEMENT PLAN 布置?			
UBC		CEBU	
REVISION NO.		SCALE	1:200
DATE		MAY 17 2008	
APPROVED		MAY 17 2008	
DRAWN		MAY 17 2008	
CHECKED		MAY 17 2008	
DESIGNED		MAY 17 2008	