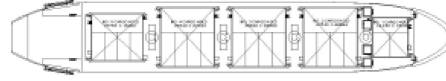
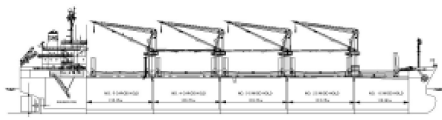




S Class



Ship Basic Information

Builders	Saiki Heavy Industries Saiki, Japan
Type	Multi-purpose dry cargo ship
Flag	Cyprus
Port of registry	Limassol
Classification	GL + 100 A5 Multi-purpose dry cargo ship + BC + DBC + MC + EP-D

Vessel Specific Information

	IMO No.	Year of Built	Summer Deadweight (mt)	Lightweight (mt)
SEATTLE	9220988	2000	31,921	7,139
SANTIAGO	9255050	2002	31,759	7,279
UBC SAIKI	9255062	2002	31,770	7,264
UBC SANTOS	9376000	2008	31,569	7,465
UBC SANTA MARTA	9380805	2008	31,583	7,451

Dimension and Main Data

Length o. a.	171.59 m
Length b.p.	163.60 m
Breadth max.	27.00 m
Depth to maindeck	14.80 m
Deadweight winter	31,035 mt
Deadweight tropical	32,815 mt
Deadweight tropical freshwater	33,791 mt
Draft Summer	10.42 m
Draft Winter	10.20 m
Draft Tropical	10.64 m
Draft Tropical Freshwater	10.87 m
Scantling draft	10.42 m
Speed	about 14.5 kn (Bf 2)
ST.LAWRENCE	NO
BOWTHRUSTER	NO
CEMENT HOLE FITTED	YES (900mm Diameter)
GT(ITC 69)	19,743
NT	10,718
Crew Complement	30

Tank Capacity (including day and settling tanks)

Fuel IFO 380	1,396 cbm (at 96%)
MDO	370 cbm (at 96%)
Freshwater	213.9 cbm
ballast tanks	10,430.31 cbm
Hatchcovers	NAKATA MAK hydraulic folding
Number of holds, Hatches	5 holds, 5 hatches (nos. 2+3+4 box shaped)
Hold dimensions(LxBxH)	No. 1: 22.12 m x 15.00 m x 13.20 m No. 2: 27.65 m x 22.86 m x 13.20 m No. 3: 27.65 m x 22.86 m x 13.20 m No. 4: 27.65 m x 22.86 m x 13.20 m No. 5: 27.65 m x 18.00 m x 13.20 m

Hatch dimensions	No. 1: 13.43 m x 15.00 m No. 2: 20.54 m x 22.86 m No. 3: 20.54 m x 22.86 m No. 4: 20.54 m x 22.86 m No. 5: 19.75 m x 18.00 m	
All holds mechanically ventilated / 4 air changes per hour		
Capacity (cbf)	Grain	Bale
No. 1	214,124	209,363
No. 2	316,656	314,462
No. 3	316,603	313,918
No. 4	316,603	314,425
No. 5	316,603	300,604
Total	1,474,593	1,452,772
Gear		
Crane 1 (Hold 1 & 2):	SWL 30 mt x 24 m at 10.5 m outreach	
Crane 2 (Hold 2 & 3):	SWL 30 mt x 24 m at 10.5 m outreach	
Crane 3 (Hold 3 & 4):	SWL 30 mt x 24 m at 10.5 m outreach	
Crane 4 (Hold 4 & 5):	SWL 30 mt x 24 m at 10.5 m outreach	
The vessel has 4 hydraulic cranes which are equipped with motor grabs capacity: 8m ³ -1.8 mt/m ³ + 12m ³		
Machinery	Main engine	
Type	MITSUBISHI 6 UEC52LA	
Power	7,060 kw / 133 rpm	
Grade fuel used:	MDO for STARTING/STOPPING/MANOUVERING heavy f.o.up to 380 cst for sea service	
Auxillary engine		
Type	Yanmar 6N18L-EV	
Number	2	
Power	550 KW /720 RPM	
Grade fuel used	DO burning	
Generator	500 kw 450 V, 60 Hz, A.C.,720 RPM 1 Emergency Generator CATERPILLAR, 250 kW	
Fuel consumption at a speed of about 14.5 kn (Bf 2)		
Ship at sea:	about 26.5 mt IFO 380 at C.S.R. about 2.0 mt MDO	
Ship in port:	about 1.0 mt (idle) about 4.0 mt (all cranes working)	
Boiler fuel consumption	about 0.7mt IFO in port	
Navigation and communication equipment		
- 2 Arpa radars	- navigational echosounder	
- ECDIS & INTEGRATED NAVIGATION SYSTEM	- Doppler log	
- SATCOM A+C	- EPIRB	
- gyro compass/autopilot	- 2 radar transponders	
- MF/HF transmitter/receiver		
- VHF radiotelephones		
- 3 portaple vhf		
- GPS receiver		
- DGPS RECEIVER		
- fax		
- navtex receiver		
All details to be considered as about, given in good faith but without any guarantee.		

Email: mail@intership-cyprus.com
Phone: +357 25 584000
Fax: +357 25 585756